



tmBroadcast

Electronic Program Guide (EPG), interactive applications, SSU, PSI/SI signalling, multiplexing... all you need for your broadcast network in a one single server. Our server, easy to integrate, works with any network (cable, satellite and terrestrial) and can manage several multiplexers.



EPG Electronic Program Guide

tmBroadcast offers you all tools you need to publish EPG. It can obtain data from external feeds (web, databases, FTP, CMS, XMLTV, MPEG2-TS streams from ASI inputs, playout systems,...) or can be dynamically managed in real time. An user-friendly web interface gives easy access to all serves functionalities, including long term EPG management or PSI/SI tables generation.



ITV Interactive television

Interactive television made simple! **tmBroadcast** creates DSMCC carrousel for interactive TV applications. Make your services more attractive with interactiv applications from different providers, with a full schedule control.



SSU Software Update

Thanks to DSMCC carrousel, **tmBroadcast** allows you to update your STB software. In adtion to standard PSI/SI tables generation, it can insert private descriptors. Maximum flexibility!



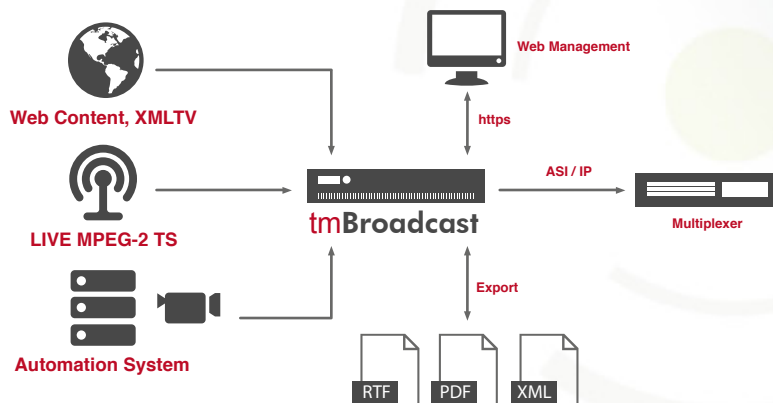
+info Other features

- **tmBroadcast** generates mobile terminals adapted EPGs. Smartphones and tablets offers your audience the most complete EPG and a new level of interactivity.
- **tmBroadcast** is fully compatible with MiViewTV from Alcatel-Lucent and Microsoft Mediaroom. It can be easily integrated in all kind of broadcast infraestructures and private formats using our SDK.

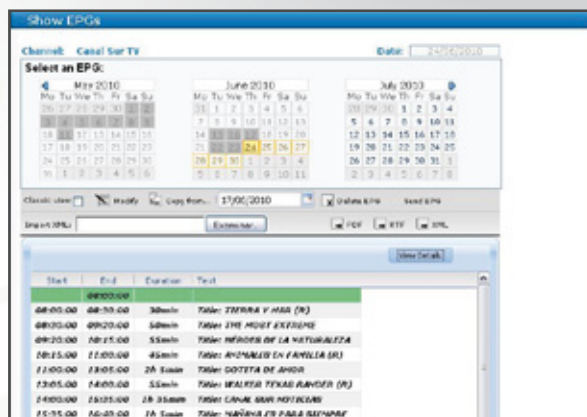


tmBroadcast

Overview



Web Interface



tmBroadcast overview: EPG external feed, ITV application source, web management, MPEG2-TS ASI/UDP output. Web interface for management, monitoring, and configuration of actions, alarms and notifications.

Specifications

Front



EPG functionality

- EPG web editor
- XMLTV, TV-Anytime, GLF import/export
- EPG import from MPEG2-TS (ASI/IP input)
- PDF/RTF/XML generation. FTP/HTTP file transfer
- EPG History
- Multi-alphabet codification
- EPG stream multiplexing

Protocols

- DVB-SI (ETSI 300 468)
- Full PSI/SI table management
- Multiple MPEG2-TS generation
- Locally Adaptable
- DVB-SSU (ETSI 102 006)
- ITV : MHP, HBBTV, MHEG5, Ginga, OCAP

Inputs and Outputs

- 2 x 10/100/1000 Base-T Ethernet interfaces (extendable)
- 2 DVB-ASI output (extendable)
- DVB-ASI inputs for MPEG2-TS import and remultiplexing (optional)

Physical characteristics

- 2 RU x 19", weight 16Kg (35.3 lb)
- 700W (1+1) AC/DC Redundant Power Supply
- 100 - 240V, 50-60Hz, 10-4 Amp
- LCD LED 20x4 with 6 bottom keyboard

Environmental conditions

- Working range: 10 - 35C (50 - 95 F)
- Off line range: -40 - 70C (-40 -158F)
- Humidity: 8 - 90% without condensation
- Off line humidity: 5 - 95% without condensation

Back



Distributor

tmira solutions - ESPAÑA
 Edificio Bestalia
 Avenida Valportillo Primera, 5
 28108 - Alcobendas (Madrid)
 Tel.: (+34) 91 229 35 60
 Fax: (+34) 91 241 47 58